



PARENT GUIDE

Dear Parent / Guardian

This booklet contains all of the information you need to know about your child learning a musical instrument with Jersey Music Service. Our team of specialist teachers provide high quality tuition alongside exciting musical ensembles, which are available at all levels for your child to take part in.

I am sure you are aware that learning to sing or to play a musical instrument can be an extremely rewarding experience and we hope that this introductory booklet will help to guide you in supporting your child throughout their musical learning.

For more information on tuition and ensembles please visit our website www.jms.je. If you would like any further information, please contact us.

Jersey Music Service

Contents

The Benefits of Music.....	4
The Role of the Student	6
The Role of the Parent / Carer	7
Lessons	8
Contacting your teacher / Quality Assurance / Safeguarding	10
Terms & Conditions	11
Instruments.....	12
Examinations.....	14
Further Opportunities.....	15

The benefits of music

Music education, including learning to sing and to play a musical instrument, provides enormous benefits for young people in terms of their intellectual, social and emotional development, motor skills, language, and overall literacy. All children can enjoy and respond to music and everyone can become involved in music making to some degree.

What are the social benefits?

Music for pre-school children can help their transition into primary school

Introducing music to children at an early age can improve their ability to learn and promote sharing, creativity and concentration. These are all invaluable skills when they enter a primary school where they begin to form new friendships and develop social skills.

Learning to sing or to play a musical instrument impacts greatly on personal and social development

Learning to sing or to play a musical instrument can be extremely motivating and provides a feeling of accomplishment when goals are achieved. It improves coordination, motor skills and teaches discipline through regular practice. Music has been shown to increase children's confidence and self-esteem as a result of the encouragement and support from their teacher and by performing in front of peers or an audience. For children who have difficulty communicating verbally, music provides a way for them to express themselves in a non-verbal way. Music is a medium that is both accessible and inclusive.

Playing in a group or ensemble teaches discipline, teamwork, cooperation, self-confidence, responsibility and social skills

Singing in a choir or playing in an ensemble is an essential part of a child's musical learning. In a group they learn to cooperate, listen and respond to each other musically and take responsibility for learning their own part. It is a fun, sociable and supportive environment that not only encourages independent learning but provides a place where they can meet new friends and feel like part of a team. Socially, children learn important life skills such as the ability to relate to others and in working as part of a team they appreciate the process and end result that comes from working together to stage a performance.

What are the academic benefits?

Music can help to improve a child's reading ability

Learning to read music can improve students' ability to remember words and so improve their vocabulary and enhance their language development. Music involves constant reading and comprehension. When you see notes on a page, you have to recognise what the note name is and translate it to a pitch of note, finger or slide position. At the same time, you need to be able to decipher rhythmic patterns and if playing a brass or woodwind instrument use your tongue to produce the correct pattern.

Music can help to improve a child's numeracy skills

Reading music requires the counting of notes and decoding of rhythms which can enhance mathematical skills. The learning benefits derive from the similarity of rhythms and patterns and the ability to interpret notes and symbols. Even at an early stage, playing musical games or rhythm games can be a positive learning experience for children.

'Playing an instrument' can be used to achieve a Duke of Edinburgh Award (DofE)

'Playing an instrument' is one of the most popular activities used by students to achieve their Duke of Edinburgh Award. A DofE Award is an excellent way to demonstrate the skills developed through extra-curricular activities, particularly when applying to universities.

It can improve chances of accessing higher education

According to a poll of 63 university admissions teams, about 59% of staff say evidence of extra-curricular activities has become more pivotal in their decisions. (The Times Educational Supplement January 2015)

You can gain additional UCAS points for entry to higher education

Music exams taken through the Associated Board of the Royal Schools of Music (ABRSM), Trinity College of Music and Rockschooll from grades 6-8 can attract 5-75 UCAS Tariff points. Trinity College London also award 35 UCAS Tariff points for Gold Arts Awards. Many higher education course providers use a UCAS Tariff points total in their entry requirements achieved by converting qualifications such as A levels (and many others) into points to allow them to compare applicants. For more information, please visit www.ucas.com and www.artsaward.org.uk

The role of the student

Learning to sing or to play a musical instrument can be an extremely rewarding experience that requires commitment and consistent practice. The student should be prepared to:

- Practice at least five days a week as recommended by their teacher.
- Attend lessons with the appropriate equipment and music.
- Participate in school and ensemble activities appropriate for their level where available.
- Maintain their instrument as instructed by their teacher if appropriate.

The role of the parent / carer

The role of a parent / carer of a child learning a musical instrument is extremely important in helping them reach their potential. This can be achieved by:

- Encouraging them to practise at least five days a week and monitoring their attendance at lessons, supporting any feedback from the teacher.
- Allowing them the appropriate space to practise away from distractions such as pets, televisions etc. The ability to concentrate and listen is very important.
- Providing the necessary resources such as music, strings, rosin, reeds, valve oil etc. where appropriate. It is important to provide a music stand or a similar arrangement which allows the child to sit / stand properly. Bad postural habits can affect the child's technique or, if learning a woodwind or brass instrument, their breathing technique.
- Ensuring that you have collected their instrument (if appropriate) before the lessons commence and being aware that it is the child's responsibility to maintain their instrument.
- Having an active involvement in their development and sharing their enthusiasm.



Lessons

Our team of specialist teachers deliver lessons within the school day and after school. We aim to place all beginners in 30 minute group lessons of 2 to 6 students. When a group is not available we may offer group lessons after school at an alternative location.

If it is not possible to place a student in a group we will offer 20 or 30 minute individual lessons where possible. Students will move into individual 20 or 30 minute lessons as they progress or if a group is no longer available.

String	Woodwind	Brass (Y3+)	Other
Violin (Y1+)	Flute (Y3+)	Trumpet / Cornet	Percussion (Incl. Drum Kit) (Y1+)
Viola (Y1+)	Oboe (Y3+)	French Horn / Tenor Horn	
Cello (Y1+)	Clarinet (Y3+)	Baritone	Keyboard (Y1+)
Double Bass (Y3+)	Bassoon (Y3+)	Euphonium / Tuba	Guitar (Y2+)
	Saxophone (Y3+)	Trombone	Ukulele (Y1+)
	Recorder (R+)		Singing (Voice) (R+)

We deliver a minimum of 30 lessons over the academic year; the number of lessons may vary from term to term.

Children having lessons in school time may need to come out of class during the school day for their lessons. We make every effort to rotate music lessons in secondary school so that children are not missing the same academic lesson each week, however this cannot be guaranteed. It is expected that children will catch up with their learning as advised by the class/subject teacher and the school.

Lessons taking place in school cannot be guaranteed to take place at a certain time, in or out of break/lunchtimes or before or after school.

Due to lessons being subsidised, JMS provision is limited to lessons on one instrument only, per child.

Additional teachers

Students receiving lessons through Jersey Music Service are advised not to receive additional tuition from another teacher on the same instrument. There are no benefits to having an additional teacher and it is important to be aware of the issues that can arise, each teacher has an individual approach to teaching and therefore learning with two specialists can be very confusing for the child and may hinder progress. If we become aware of a child receiving lessons on the same instrument from another teacher our lessons will be withdrawn.

Applying for lessons

Lessons can be applied for via our online registration system on our website. Children will be placed on our waiting list until a lesson becomes available.

Fees & Payments

Fees are published annually and are available to view online at www.jms.je. You will receive an invoice prior to the beginning of the autumn, spring and summer terms. The payment of lessons and instrument hire can be paid to the Government of Jersey Treasury by cheque, card payment by phone or online, or by direct debit. You will receive details of these payment methods along with each invoice.

Remissions

Income Support

Where a family is in receipt of income support there is no charge to access Jersey Music Service's provision, please contact JMS for a registration form or download a form at www.jms.je, once received your details will be verified with the Social Security Department. This provision is limited to lessons and associated instrument hire on one instrument.

Jersey Music Service will verify termly whether the parent/guardian is in receipt of income support with the Social Security Department.

Sibling Discount

Fee reductions are available for families with more than one child receiving tuition from Jersey Music Service. These reductions are displayed on our fees document (available to view on our website) and are automatically applied.

Bursaries

A limited fund is available to provide support to families who would not otherwise be able to access provision.

Contacting your teacher

Parent-teacher meetings are held once a year and a progress report is provided in the summer term, a student diary should be used to encourage communication between the student and teacher. Please contact the JMS office if you would like to communicate with your child's teacher.



Quality assurance

Our teachers are all quality assured by Jersey Music Service. Should you have any queries regarding a teacher please contact us.

Safeguarding

As a trusted organisation Jersey Music Service has a moral and statutory responsibility to safeguard and promote the welfare of all pupils who access our facilities and services. All JMS staff share the objective to help keep Jersey's children and young people safe by:

- Providing a safe environment for children and young people to learn and develop
- Identifying children and young people who are suffering or likely to suffer significant harm
- Taking appropriate action with the aim of making sure they are kept safe both at home and within the school or learning settings within which they teach

JMS has a designated safeguarding lead, Katy Parker, who is responsible for liaising with school's staff and parents and supporting staff to make contact with MASH or any other appropriate organisations.

JMS staff are kept up to date with training in safeguarding, procedures to follow and keeping data confidential. They also have a strict procedure to follow if a child makes a disclosure or if they are concerned for the wellbeing of a child when working in a school and in any other JMS teaching facilities.

Terms & Conditions

Our terms and conditions can be found at www.jms.je and are updated annually in the Spring term.

Cancellation of Lessons

As per our Cancellation Policy, should you wish to withdraw your child from lessons, written notice is required at least six weeks before the end of the term you wish tuition to cease. Notification must be received in writing to: Jersey Music Service, Old Mont Cantel House, St Helier, Jersey, JE2 3ZQ or by email to: jms@music.sch.je

Care of instruments

Musical instruments are fragile and expensive, it is the child's responsibility to maintain their instrument. We would recommend that you:

- Ensure that the instrument is treated with care at all times as directed by the teacher and, if on loan, is returned in good condition when requested.
- Allow the instrument to only be used by the student to whom it belongs.
- Ensure that space is made available for the safe keeping of the instrument, when it is not being played it should be kept in the case.
- Ensure that the instrument is brought home after each lesson to allow for home practice.

Hire

Instrument hire is available through the JMS Hire Service for all instruments except guitars, percussion, keyboard, ukulele and recorder. Parents are required to collect and return the instrument from/to the JMS office.

When ceasing lessons, instruments must be returned to the JMS office prior to the last day of term.

Our Hire Service is only available for students receiving lessons through JMS.

Consumables

The instrument your child will be hiring will include all essential items. It will, however, be necessary to purchase other consumable items from time to time, as seen in the table below. **If you are beginning lessons for the first time, please check your starter letter for details of the items you will initially require.**

Strings	Woodwind	Brass
<ul style="list-style-type: none"> • Replacement Strings • Rosin • Duster 	<ul style="list-style-type: none"> • Reeds (excluding flute) • Cork Grease • Additional Cleaners 	<ul style="list-style-type: none"> • Valve Oil (excluding trombone) • Slide Grease • Slide Cream (trombone only) • Cleaning Brushes

We also recommend that you purchase a music stand or similar for your child to use at home.

Purchase advice for instruments that cannot be hired

All **guitar** students will need their own acoustic guitar to use in lessons and to practice at home. We recommend the following sizing guidelines (although this may vary from child to child):

Year 2: ½ Size

Year 3 – 5: ¾ Size

Year 6+: Full Size

Percussion instruments will be available at school for the lesson to take place on, however, we recommend that all beginner percussion students need at minimum a drum practice pad at home.

Although a **keyboard** will be in situ at school for lessons to take place on, it is essential that all keyboard students have an instrument to practice on at home. This can be a basic 61 key keyboard, digital piano, or a real piano.

Purchasing instruments

If you are considering buying your child a musical instrument, we strongly advise that you speak to your child's teacher who will advise you which instrument is best for your child. Our teachers are specialists in their field and have a vast knowledge on the appropriate make and price of instruments suitable for the level of your child.

The JMS Instrument Hire Service is able to offer an **Assisted Purchase Scheme**. Through this scheme the service purchases the instrument of your choice, you then repay the service interest free over an agreed period of time. The instrument remains the property of Jersey Music Service until all payments have been made and cannot be taken off island without the express permission of Jersey Music Service. Should you leave the island to live elsewhere all outstanding costs must be completed. This scheme is available to all students in receipt of a lesson through Jersey Music Service and in full time education in Jersey.

Please contact us should you have any queries regarding instrument hire, buying an instrument or you would like an application form for our assisted purchase scheme.

ABRSM, Rockschoool & Trinity College examinations

Associated Board of the Royal Schools of Music (ABRSM), Trinity College London and Rockschoool offer music examinations. These examinations provide a progressive system of assessments ranging generally from Grade 1 to 8 and are recognised as international benchmarks of achievement valued by teachers and music institutions all over the world.

To read more about ABRSM, ABRSM Music Medals, Rockschoool and Trinity College London examinations please visit the links below:

Associated Board of the Royal Schools of Music

www.abrsm.org

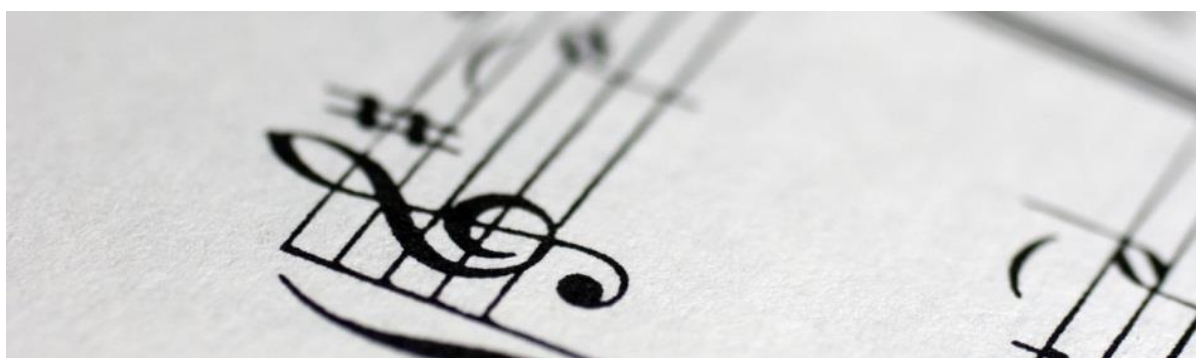
Trinity College London

www.trinitycollege.com and www.trinityrock.com

Rockschoool

www.rslawards.com

Students may be invited to enter for an examination by their teacher when they have reached the appropriate level of skill and technique on their instrument.



Further Opportunities

With rehearsals each week, playing a musical instrument in our ensembles is an essential part of learning, allowing students to enhance their technique, meet other musicians, learn new skills and develop their confidence in a fun and supportive environment.

JMS Ensembles

Jersey Music Service offer a variety of ensembles to both JMS and private students, please refer to our website www.jms.je for more information and a registration form. Once we have received the form we will notify you of the first date to attend.

Singing Weekends

Singing Weekends take place once a term and are aimed at all young people in years 4, 5 and 6 (age 8 – 11). Led by visiting renowned guest conductors, a mixture of styles are covered with something for everyone, culminating in an informal concert for friends and family. More information can be found on our website www.jms.je

Performance Platforms

Our Performance Platforms are an opportunity for Jersey Music Service students of all ages to perform in a friendly environment and to receive feedback and advice from distinguished professional musicians. The emphasis of the Performance Platform is on education and performance rather than competition - all performers receive a certificate for participating.

PwC Jersey Young Musician of the Year

The PwC Jersey Young Musician of the Year Competition is part of Jersey Music Service's provision of opportunities for young musicians in Jersey. It incorporates the well-established sectional competitions for String, Woodwind, Piano, Brass, Vocal and Percussion. The competition has two stages; the heats and the final. The six sectional competitions act as heats, which are held at the end of January. The winner of each sectional competition will be invited to go forward to the final held at the Jersey Opera House.

PwC Jersey Junior Musician of the Year Competitions

The PwC Jersey Junior Musician of the Year Competitions were introduced in order to provide valuable performance experience prior to entering the PwC Jersey Young Musician of the Year Competition. Applications are welcome from musicians under the age of 13 to the string, woodwind, piano, brass, vocal and percussion competitions.

Community Engagement Projects

Other than the annual calendar of events, additional projects are taken on at various points over the course of the year to provide musicians with further opportunities to develop their skills and to experience a variety of performance opportunities.

JMS Jersey Music Service

Jersey Music Service
Old Mont Cantel House
La Pouquelaye
St Helier
JE2 3ZQ
T: 01534 832230
E: jms@music.sch.je
W: www.jms.je

